



Accessory Overview

Ford FOCUS®

01/2011 – 08/2014


Accessories

Table of Contents

- TRANSPORTATION** 03
 - Roof Transportation
 - Tow Bars
 - Load Compartment Accessories
- PROTECTION** 05
 - Exterior Protection
 - Interior Protection
- SAFETY & SECURITY** 07
 - Antitheft Devices
- COMFORT** 07
 - Comfort Products
- WHEELS** 08
 - Alloy Wheels
 - Wheel Accessories
- PERFORMANCE PARTS** 11
 - Interior Performance
- STYLING** 11
 - Body Design
 - Interior Design
 - Suspension-Lowering Kit

If you are viewing this PDF on your electronic device, products are clickable and will lead you directly to the full product information on the Online Accessory Catalogue.

This Accessory Overview represents a selection of available accessories specifically for this model. Please visit the Online Accessory Catalogue for the full range of products.



TRANSPORTATION

ROOF TRANSPORTATION



RRP



Roof Base Carrier

Aluminium, lockable, weight approx. 5 kg, maximum load capacity of 75 kg – Estate without roof rails

1 727 572
£226.39¹



Roof Base Carrier

Aluminium, lockable, weight approx. 5 kg, maximum load capacity of 75 kg. – 5 door

1 767 840
£237.54¹



Roof Cross Bars

Aluminium, lockable, weight approx. 4 kg, maximum load capacity of 75 kg. – Estate with roof rails

1 880 359
£237.54¹

TOW BARS



RRP



Detachable Tow Bar

Only in combination with vehicle specific electrical kit, suitable for rear bike carriers with up to 3 bikes, not in combination with body styling kit – Estate, except ST

1 880 329
£553.58²



Detachable Tow Bar

Only in combination with vehicle specific electrical kit. – 5-door, except ST

1 738 479
£854.40²



Fixed Tow Bar

Only in combination with vehicle specific electrical kit, not in combination with body styling kit – Estate, except ST and RS. Max. vertical load: 75 kg

1 880 324
£578.51²



Fixed Tow Bar

Only in combination with vehicle specific electrical kit. – 5-door, except ST

1 724 861
£552.42²

* Warranty covered by third party supplier.

1. Excludes fitting. Recommended Retail Price including VAT.

2. Recommended Retail Price including VAT. Please ask your Ford dealer for additional fitting charges. Please note that supplementary parts may also be required.

3. Recommended Retail Price including VAT. Please ask your Ford dealer for additional fitting charges. Please note that supplementary parts may also be required. Price is per alloy and excludes tyre and fitting parts.

4. Recommended Retail Price including VAT. Please ask your Ford dealer for additional fitting and painting charges. Please note that supplementary parts may also be required.

Prices valid from 24.06.2025. The right is reserved to change prices.

**Retractable Tow Bar**

Only in combination with vehicle specific electrical kit, suitable for rear bike carriers with up to 3 bikes, not in combination with body styling kit – Estate, except ST.

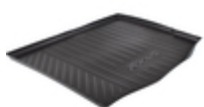
1 880 330
£1,336.80²

**Retractable Tow Bar**

Can be tucked under the bumper, with electrical release, only in combination with vehicle specific electrical kit, suitable for rear bike carriers with up to 3 bikes, not in combination with body styling kit – 5-door, except ST

1 842 553
£1,310.40²

LOAD COMPARTMENT ACCESSORIES

**RRP****Boot Liner**

With Focus logo, 40 mm high – 5-door with full size spare wheel

2 048 997
£76.52¹

**Boot Liner**

With Focus logo, 25 mm high, combination with dog guard is not possible – Estate with mini spare wheel or tyre repair kit

2 039 792
£76.52¹

**Boot Liner**

With Focus logo, 80 mm high – 5-door with mini spare wheel or tyre repair kit

2 039 791
£76.52¹

**Boot Liner Tray design**

With Focus logo, 80 mm high, with aluminium partition. Not in combination with load retention guard – Estate with mini spare wheel or tyre repair kit

2 047 189
£151.93¹

**Load Compartment Divider for Load Retention Guard**

Adjustable, divides luggage compartment into two sections, for use with load retention guard half height. Not possible in combination with boot liner. – Estate

1 723 910
£211.46¹

**Load Compartment Mat Black, with Focus logo**

With fold-out bumper and rear seat cover – 5-door with tyre repair kit

1 738 195
£87.47¹

* Warranty covered by third party supplier.

1. Excludes fitting. Recommended Retail Price including VAT.

2. Recommended Retail Price including VAT. Please ask your Ford dealer for additional fitting charges. Please note that supplementary parts may also be required.

3. Recommended Retail Price including VAT. Please ask your Ford dealer for additional fitting charges. Please note that supplementary parts may also be required. Price is per alloy and excludes tyre and fitting parts.

4. Recommended Retail Price including VAT. Please ask your Ford dealer for additional fitting and painting charges. Please note that supplementary parts may also be required.

Prices valid from 24.06.2025. The right is reserved to change prices.



Load Compartment Mat Black, with Focus logo
With fold-out bumper and rear seat cover – 5-door with mini spare wheel

1 738 194
£64.27¹



Load Compartment Mat Black, with Focus logo
With fold-out bumper and rear seat cover – estate

1 738 196
£88.67¹



Load Compartment Mat Black, with Focus logo
With fold-out bumper and rear seat cover – 5-door with full size spare wheel

1 738 193
£79.03¹



Load Floor Net
With 4 tie-down mounts, secures smaller items on luggage compartment floor

1 300 412
£29.15¹



Load Retention Guard Half height, to be fixed behind rear seats
Not possible in combination with boot liner – Estate

1 723 909
£296.03²



Load Retention Net to be fixed behind second seat row
Black polyester, rollo system – Estate, except LPG

1 736 804
£296.82²

PROTECTION EXTERIOR PROTECTION



RRP



Body Undershield for engine and transmission
Robust steel underside protection against damages, black powder coated, thickness of 1.8 mm, weight: 11.35 kg – Except ST

1 870 831
£144.28²



Mud Flaps front, contoured
Set of 2, only for vehicles without body styling kit – Except ST & RS, also for BEV

1 722 673
£49.42²

* Warranty covered by third party supplier.

1. Excludes fitting. Recommended Retail Price including VAT.

2. Recommended Retail Price including VAT. Please ask your Ford dealer for additional fitting charges. Please note that supplementary parts may also be required.

3. Recommended Retail Price including VAT. Please ask your Ford dealer for additional fitting charges. Please note that supplementary parts may also be required. Price is per alloy and excludes tyre and fitting parts.

4. Recommended Retail Price including VAT. Please ask your Ford dealer for additional fitting and painting charges. Please note that supplementary parts may also be required.

Prices valid from 24.06.2025. The right is reserved to change prices.

**Mud Flaps rear, contoured**

Set of 2, only for vehicles without body styling kit – Estate

1 722 187

£49.42²**Mud Flaps rear, contoured**

Set of 2, only for vehicles without body styling kit – 5-door, except ST. Also for BEV

1 798 977

£49.42²**Rear Bumper Protector Foil, transparent**

Protects your vehicle's rear bumper during loading or unloading. – 5-door, also for BEV

1 723 591

£38.57²**Rear Bumper Protector in 3D stainless steel design**

Protects your vehicle's rear bumper during loading or unloading. – Estate model

1 709 550

£219.94²**Rear Bumper Protector plate in 3D stainless steel design**

Protects your vehicle's rear bumper during loading or unloading, with ribbed surface, perfectly matches existing boot interior trim – 4-door

1 709 549

£124.36²

INTERIOR PROTECTION

**RRP****Rubber Floor Mats front, black**

Set of 2, with Focus logo and fixings on driver's side – Also for BEV

2 027 598

£49.24¹**Rubber Floor Mats rear, black**

Contoured, set of 2 – Also for BEV

1 717 662

£32.18¹**Velour Floor Mats front, black**

Set of 2, with fixings on driver's side – Also for BEV

1 892 571

£56.26¹

* Warranty covered by third party supplier.

1. Excludes fitting. Recommended Retail Price including VAT.

2. Recommended Retail Price including VAT. Please ask your Ford dealer for additional fitting charges. Please note that supplementary parts may also be required.

3. Recommended Retail Price including VAT. Please ask your Ford dealer for additional fitting charges. Please note that supplementary parts may also be required. Price is per alloy and excludes tyre and fitting parts.

4. Recommended Retail Price including VAT. Please ask your Ford dealer for additional fitting and painting charges. Please note that supplementary parts may also be required.

Prices valid from 24.06.2025. The right is reserved to change prices.



Velour Floor Mats rear, black
Set of 2 – Also for BEV

1 717 664
£42.70¹

SAFETY & SECURITY ANTITHEFT DEVICES



RRP



TVL* Pedal Box

Key Features: • High visibility, durable powder coat finish • Prevents pedals from being operated • Integrated secure storage compartment for sat-nav or mobile phone • Integral high security lock • Vehicle cannot be driven with PedalBox installed • Also ideal for vehicles on display

FOFOC3-PBM
£160.00¹



TVL* ProtectaCar Pack

Key Why Buys: • Visible deterrent to would-be thieves • Helps to prevent unauthorised access of your vehicle's onboard diagnostic (OBD) port • Helps to prevent thieves from cloning your vehicle keys • Helps to prevent the factory external door lock from being attacked

FOFOC3-PAC
£226.43²



TVL* RepLock

Key Why Buys: • Visual deterrent to vehicle interference • No drilling of vehicle required – installs quickly, directly in place of the factory door lock • Low maintenance and high security locking system

FOFOC3-REPL-HYK
£125.51²

COMFORT COMFORT PRODUCTS



RRP



Rati* Armrest Armster 2

Folding armrest to be fitted between the front seats. Features height adjustment in 4 different positions, integrated stowage box and a padded surface with forward movable lid. Armrest body colour in matt black with gloss black element

2 025 501
£112.96²



ClimAir® Sunblinds for all rear windows

Set of 5 rear window blinds includes; 2 x Rear window blinds, 2 x Quarter light window blinds, 1 x Rear windscreen blind – 5-door, also for BEV

1 744 533
£215.62²

* Warranty covered by third party supplier.

1. Excludes fitting. Recommended Retail Price including VAT.

2. Recommended Retail Price including VAT. Please ask your Ford dealer for additional fitting charges. Please note that supplementary parts may also be required.

3. Recommended Retail Price including VAT. Please ask your Ford dealer for additional fitting charges. Please note that supplementary parts may also be required. Price is per alloy and excludes tyre and fitting parts.

4. Recommended Retail Price including VAT. Please ask your Ford dealer for additional fitting and painting charges. Please note that supplementary parts may also be required.

Prices valid from 24.06.2025. The right is reserved to change prices.

**ClimAir®* Sunblinds for rear side windows only**

Set of 2 – Estate

1 744 536

£123.56²**ClimAir®* Sunblinds for rear side windows only**

Set of 2 rear window blinds. Note does not include quarter light windows – 5-door, also for BEV

1 744 534

£123.56²**ClimAir®* Wind Deflectors for front door windows, black**

- Set of 2
- Reduce wind turbulence and noise
- Gives you a more comfortable drive with the front windows open, even during light rain
- 3 mm cast acrylic glass

Note: Make sure that the wind deflector (in the mirror area) is seated on the window ledge (rail) and does not slip into the window slot – 4-/5-door and Estate, also for BEV

1 741 268

£64.13²**ClimAir®* Wind Deflectors for rear door windows, black**

- Set of 2
- Reduce wind turbulence and noise
- Gives you a more comfortable drive with the front windows open, even during light rain
- 3 mm cast acrylic glass

– 4-/5-door, also for BEV

1 741 269

£34.98²

WHEELS

ALLOY WHEELS

**RRP****Alloy Wheel 16" 10 x 2-spoke design, silver**

Single alloy wheel, 7j x 16", offset 50, fit with 205/55 R16 and 215/55 R16 tyre. ECONetic models only in combination with tyre size 205/55 R16 – Except ST

2 237 345

£270.82³**Alloy Wheel 16" 10 x 2-spoke premium design, silver**

Single alloy wheel, 7j x 16", offset 50, fit with 205/55/ r16 tyre or 215/55 R16. ECONetic models only in combination with tyre size 205/55 R16 – Except ST

2 237 376

£270.82³

* Warranty covered by third party supplier.

1. Excludes fitting. Recommended Retail Price including VAT.

2. Recommended Retail Price including VAT. Please ask your Ford dealer for additional fitting charges. Please note that supplementary parts may also be required.

3. Recommended Retail Price including VAT. Please ask your Ford dealer for additional fitting charges. Please note that supplementary parts may also be required. Price is per alloy and excludes tyre and fitting parts.

4. Recommended Retail Price including VAT. Please ask your Ford dealer for additional fitting and painting charges. Please note that supplementary parts may also be required.

Prices valid from 24.06.2025. The right is reserved to change prices.

**Alloy Wheel 16" 5 x 2-spoke design, arctic grey machined**

Single alloy wheel, 7j x 16", offset 50, fit with 205/55/R16 or 215/55/R16 tyres. ECONetic models only in combination with tyre size 205/55 R16 – Except ST

2 237 368

£270.82³**Alloy Wheel 16" 5 x 2-spoke design, silver**

Single alloy wheel, 7j x 16", offset 50, fit with 205/55 R16 or 215/55 R16 tyres. ECONetic models only in combination with tyre size 205/55 R16 – Except ST

2 238 317

£270.82³**Alloy Wheel 16" 5 x 3-spoke design, silver**

Single alloy wheel, 7j x 16", offset 50, fit with 205/55 R16 or 215/55 R16 tyre. ECONetic models only in combination with tyre size 205/55 R16 – Except ST

2 238 233

£270.82³**Alloy Wheel 16" 5-spoke design, silver**

Single alloy wheel, 7j x 16", offset 50, fit with 205/55 R16 or 215/55 R16 tyres. ECONetic models only in combination with tyre size 205/55 R16 – Except ST

2 238 319

£193.68³**Alloy Wheel 16" 5-spoke Y-design, silver**

Single alloy wheel, 7j x 16", offset 50, fit with 205/55 R16 or 215/55 R16 tyres. ECONetic models only in combination with tyre size 205/55 R16 – Except ST

1 824 514

£270.82³**Alloy Wheel 16" 7 x 2-spoke design, silver**

Single alloy wheel, 7j x 16", offset 50, fit with 205/55 R16 or 215/55 R16 tyre. ECONetic models only in combination with tyre size 205/55 R16 – Except ST

1 827 039

£270.82³**Alloy Wheel 17" 10 x 2-spoke Y-design, silver**

Single alloy wheel, 7j x 17", offset 50, fit with 215/50 R17 tyre – Except ECONetic

1 698 634

£291.22³**Alloy Wheel 17" 15-spoke design, silver**

Single alloy wheel, 7j x 17", offset 50, fit with 215/50 R17 tyre – Except ECONetic

1 698 637

£291.22³

* Warranty covered by third party supplier.

1. Excludes fitting. Recommended Retail Price including VAT.

2. Recommended Retail Price including VAT. Please ask your Ford dealer for additional fitting charges. Please note that supplementary parts may also be required.

3. Recommended Retail Price including VAT. Please ask your Ford dealer for additional fitting charges. Please note that supplementary parts may also be required. Price is per alloy and excludes tyre and fitting parts.

4. Recommended Retail Price including VAT. Please ask your Ford dealer for additional fitting and painting charges. Please note that supplementary parts may also be required.

Prices valid from 24.06.2025. The right is reserved to change prices.



Alloy Wheel 17" 5 x 2-spoke design, luster nickle

Single alloy wheel, 7j x 17", offset 50, fit with 215/50 R17 tyre – Except EOnetic

2 237 361

£291.22³



Alloy Wheel 17" 5-spoke premium design, silver

Single alloy wheel, 7j x 17", offset 50, fit with 215/50 R17 tyre – Except EOnetic

2 237 379

£291.22³



Alloy Wheel 18" 5-spoke design, silver

Single alloy wheel, 8j x 18", offset 55, fit with 235/40 R18 tyre, only in combination with steering rack limiter – Except EOnetic

1 698 635

£375.60³



Alloy Wheel 18" 7-spoke design, silver

Single alloy wheel, 8j x 18", offset 55, fit with 235/40 R18 tyre, only in combination with steering rack limiter – Except EOnetic

2 254 141

£375.60³



Alloy Wheel 18" 8 Spoke Y-Design, black machined finish

Single alloy wheel, 8j x 18", offset 55, fit with 235/40 R18 tyre, only in combination with steering rack limiter – Except EOnetic

2 237 408

£375.60³



Alloy Wheel 18" 8 Spoke Y-Design, sterling silver

Single alloy wheel, 8j x 18", offset 55, fit with 235/40 R18 tyre, only in combination with steering rack limiter – Except EOnetic

2 237 365

£375.60³

WHEEL ACCESSORIES



RRP



Wheel Cover 16"

Single cover fits 16" steel wheels – Except ST. Also for BEV

1 683 453

£35.14¹

* Warranty covered by third party supplier.

1. Excludes fitting. Recommended Retail Price including VAT.

2. Recommended Retail Price including VAT. Please ask your Ford dealer for additional fitting charges. Please note that supplementary parts may also be required.

3. Recommended Retail Price including VAT. Please ask your Ford dealer for additional fitting charges. Please note that supplementary parts may also be required. Price is per alloy and excludes tyre and fitting parts.

4. Recommended Retail Price including VAT. Please ask your Ford dealer for additional fitting and painting charges. Please note that supplementary parts may also be required.

Prices valid from 24.06.2025. The right is reserved to change prices.



Wheel Cover 16"

Single cover fits 16" steel wheels – Except ST. Also for BEV

1 778 008

£35.14¹



Wheel Cover 16"

Single cover fits 16" steel wheels – Except ST. Also for BEV

1 229 719

£34.24¹



Wheel Cover 16"

Single cover, fits 16" steel wheels – Except ST. Also for BEV

1 360 364

£34.24¹



Wheel Cover 16"

Set of 4 silver cover trims, fits 16" steel wheels – Except ST. Also for BEV

1 151 368

£73.86¹

PERFORMANCE PARTS INTERIOR PERFORMANCE



RRP



Performance Shift Knob with blue Ford RS logo

Black carbon fiber shift knob with white 6-speed gear shift pattern

2 291 196

£128.68²

STYLING BODY DESIGN



RRP



Body Side Skirt for left vehicle side

Primed, to be painted in body colour – 5-door and Estate, except ST

1 759 887

£391.09⁴

* Warranty covered by third party supplier.

1. Excludes fitting. Recommended Retail Price including VAT.

2. Recommended Retail Price including VAT. Please ask your Ford dealer for additional fitting charges. Please note that supplementary parts may also be required.

3. Recommended Retail Price including VAT. Please ask your Ford dealer for additional fitting charges. Please note that supplementary parts may also be required. Price is per alloy and excludes tyre and fitting parts.

4. Recommended Retail Price including VAT. Please ask your Ford dealer for additional fitting and painting charges. Please note that supplementary parts may also be required.

Prices valid from 24.06.2025. The right is reserved to change prices.

**Body Side Skirt for right vehicle side**

Primed, to be painted in body colour – 5-door and estate, except ST

1 759 881

£391.09⁴**Front Bumper Skirt with high gloss black aerofoil**

Comes primed, to be painted in body colour – 5-door and estate

1 759 505

£570.48⁴**Front Grille lower part, centre**

In high gloss black, honey comb design – For 5-door and estate with front parking distance sensors

1 759 889

£312.96²**Front Grille lower part, centre**

In high gloss black, honey comb design – For 5-door and estate without front parking distance sensors

1 759 888

£295.61²**Front Grille lower part, left and right side**

In high gloss black, honey comb design – 5-door and estate, except ST

1 759 890

£295.61²**Mirror Caps left hand mirror**

Chrome, high gloss finish

1 529 485

£87.53²**Mirror Caps right hand mirror**

Chrome, high gloss finish

1 529 572

£87.53²**Rear Bumper Skirt with high gloss black diffuser insert**

Comes primed, to be painted in body colour – Estate with straight exhaust pipe and rear parking distance sensors. Except ST. Only for vehicles without tow bar

1 933 307

£915.60⁴**Rear Bumper Skirt with high gloss black diffuser insert**

Comes primed, to be painted in body colour – 5-door with straight exhaust pipe. Only for vehicles without tow bar

2 004 599

£789.60⁴

* Warranty covered by third party supplier.

1. Excludes fitting. Recommended Retail Price including VAT.

2. Recommended Retail Price including VAT. Please ask your Ford dealer for additional fitting charges. Please note that supplementary parts may also be required.

3. Recommended Retail Price including VAT. Please ask your Ford dealer for additional fitting charges. Please note that supplementary parts may also be required. Price is per alloy and excludes tyre and fitting parts.

4. Recommended Retail Price including VAT. Please ask your Ford dealer for additional fitting and painting charges. Please note that supplementary parts may also be required.

Prices valid from 24.06.2025. The right is reserved to change prices.

**Rear Bumper Skirt with high gloss black diffuser insert**

Comes primed, to be painted in body colour – Estate with downward-facing exhaust pipe and without rear parking distance sensors. Only for vehicles without tow bar

1 933 306

£883.20⁴**Rear Bumper Skirt with high gloss black diffuser insert**

Comes primed, to be painted in body colour – 5-door with downward facing exhaust pipe. Only for vehicles without tow bar

2 004 598

£697.20⁴**Rear Bumper Skirt with high gloss black diffuser insert**

Comes primed, to be painted in body colour – Estate with straight exhaust pipe and without rear parking distance sensors. Only for vehicles without tow bar

1 933 310

£850.80⁴**Rear Bumper Skirt with high gloss black diffuser insert**

Comes primed, to be painted in body colour – Estate with downward facing exhaust pipe and with rear parking distance sensors. Only for vehicles without tow bar

1 933 309

£878.40⁴**Roof Spoiler**

Primed, to be painted in body colour. Integrated brake light to be ordered separately (Finis 1855771) – 5-door, except ST. Also for BEV

1 869 306

£426.74⁴**Roof Spoiler**

Primed, to be painted in body colour – Estate

2 423 083

£417.23⁴

INTERIOR DESIGN

**RRP****Gear Lever Knob black leather and aluminium design**

Including vinyl gaiter – For 6-speed transmission

2 231 358

£76.67²**Scuff Plates front, with Focus logo**

Polished stainless steel, set of 2 – Except ST. Also for BEV

1 726 425

£63.02²

* Warranty covered by third party supplier.

1. Excludes fitting. Recommended Retail Price including VAT.

2. Recommended Retail Price including VAT. Please ask your Ford dealer for additional fitting charges. Please note that supplementary parts may also be required.

3. Recommended Retail Price including VAT. Please ask your Ford dealer for additional fitting charges. Please note that supplementary parts may also be required. Price is per alloy and excludes tyre and fitting parts.

4. Recommended Retail Price including VAT. Please ask your Ford dealer for additional fitting and painting charges. Please note that supplementary parts may also be required.

Prices valid from 24.06.2025. The right is reserved to change prices.



Scuff Plates front, with illuminated Focus logo
Aluminium, set of 2, blue illuminated Focus logo – For vehicles with Interior Ambient Light or Ambient LED Multi Colour Lighting

1 862 646
£320.12²

SUSPENSION-LOWERING KIT

^
RRP



Eibach®* Suspension-Lowering Kit
Pro-Kit is Eibach's®* premium suspension system that works by lowering the car's centre of gravity, thus reducing squat during acceleration, body roll in corner and excessive nose-dive when braking. Lowering front / rear by approx. 25 mm / 25 mm and 25 mm / 10 mm on Focus ST – 4-/5-door with front axle load higher than 985 kg. For front axle load data, please refer to your vehicle's owners manual

1 741 473
£234.25²



Eibach®* Suspension-Lowering Kit
Pro-Kit is Eibach's®* premium suspension system that works by lowering the car's centre of gravity, thus reducing squat during acceleration, body roll in corner and excessive nose-dive when braking. Lowering front / rear by approx. 25 mm / 25 mm and 25 mm / 10 mm on Focus ST – Estate with front axle load higher than 985 kg. For front axle load data, please refer to your vehicle's owners manual

1 762 707
£234.25²



Eibach®* Suspension-Lowering Kit
Pro-Kit is Eibach's®* premium suspension system that works by lowering the car's centre of gravity, thus reducing squat during acceleration, body roll in corner and excessive nose-dive when braking. Lowering front / rear by approx. 25 mm / 25 mm – 4-/5-door with front axle load up to 985 kg. For max. front axle load, please refer to your vehicle's owners manual

1 741 472
£234.25²

* Warranty covered by third party supplier.
1. Excludes fitting. Recommended Retail Price including VAT.
2. Recommended Retail Price including VAT. Please ask your Ford dealer for additional fitting charges. Please note that supplementary parts may also be required.
3. Recommended Retail Price including VAT. Please ask your Ford dealer for additional fitting charges. Please note that supplementary parts may also be required. Price is per alloy and excludes tyre and fitting parts.
4. Recommended Retail Price including VAT. Please ask your Ford dealer for additional fitting and painting charges. Please note that supplementary parts may also be required.
Prices valid from 24.06.2025. The right is reserved to change prices.

Ford Motor Company Limited.
Registered in England No 235446.
Registered Office: Arterial Road,
Laindon, Essex, SS15 6EE,
England
www.ford-accessories.co.uk

Your Ford Dealer can provide information about financing options of the shown accessories.

Disclaimer:

© 2025 Ford Motor Company. ® is a trademark of Ford or its affiliates. Thule® is a trademark of Thule Sweden AB used with permission. Ford policy is one of continuous product development. The right is reserved to change specifications, colours and prices of the models and items illustrated and described in this publication at any time and images may vary. This publication contains both original Ford accessories as well as a range of products from our suppliers. Fitment of accessories may have an impact on your vehicle's fuel consumption. *The identified accessories are carefully selected third party supplier branded accessories and may have different warranty conditions, the details of which can be obtained from your Ford Dealer. The Bluetooth® word mark and logos are owned by the Bluetooth SIG, Inc. and any use of such marks by Ford Motor Company is under licence. The iPhone/iPod word mark and logos are the property of Apple Inc. Other trademarks and trade names are those of their respective owners.

Note on fuel consumption and CO2 emission data: For more information about the official fuel consumption and the official model specific CO2 emissions please refer to the "Guide on the fuel economy, CO2-Emissions and power consumption" which can be obtained at your dealership and on <https://www.datgroup.com/> free of charge.

Dealer fitted accessories are fitted after registration and could have an impact on your vehicle's fuel / energy consumption. The Combined Fuel / Energy Consumption and Combined CO2 Emissions (WLTP) figures do not include dealer fitted accessories.

